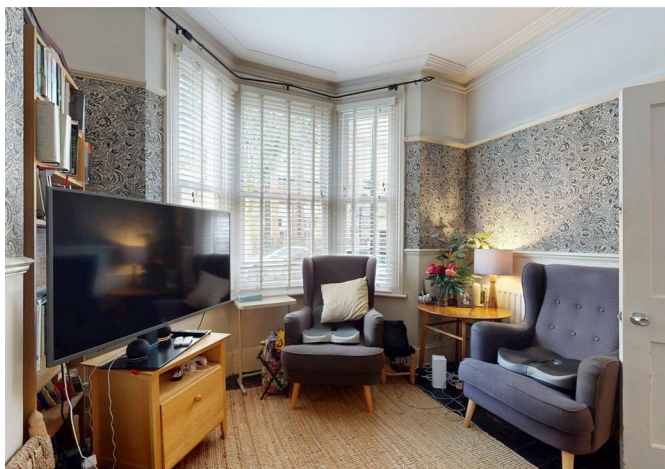


Eleanor Road, London, E15 4AB

**£625,000**





## Eleanor Road, London, E15 4AB

£625,000

Barrain London are very pleased to introduce to market this very attractive 3 double bedroom Victorian home located in a quiet residential street. Besides generous sleeping accommodation, this property features two large receptions and a spacious kitchen-diner, as well as a ground floor cloakroom. And there is a cellar. Period charm throughout this home spills into the cosy courtyard garden, a great place to relax with a book in the sun or have a BBQ.

Location, location, location! Quick access to the Elizabeth Line at Maryland station puts the whole of greater London at your feet: the West End, the City, or Canary Wharf in 25 minutes, or Heathrow in 40 minutes. Whether you are working in the Square Mile, jetting off to Singapore, or heading out to London's Theatreland, it is all conveniently accessible. Closer to home, Westfield Stratford shopping centre, Morrisons, LIDL and Sainsbury's supermarkets are all in the neighbourhood.

Families with school aged children will appreciate the excellent local junior and senior schools, public and private, many holding 'Outstanding' accreditation from OFSTED. And families who enjoy the great outdoors will definitely appreciate the green spaces, sporting facilities and playgrounds available just moments away in West Ham Park

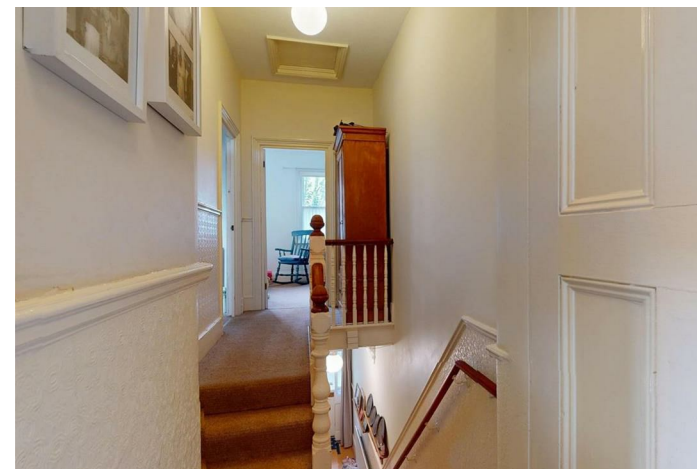
Call us today to arrange your exclusive viewing!



## Description



## Situation

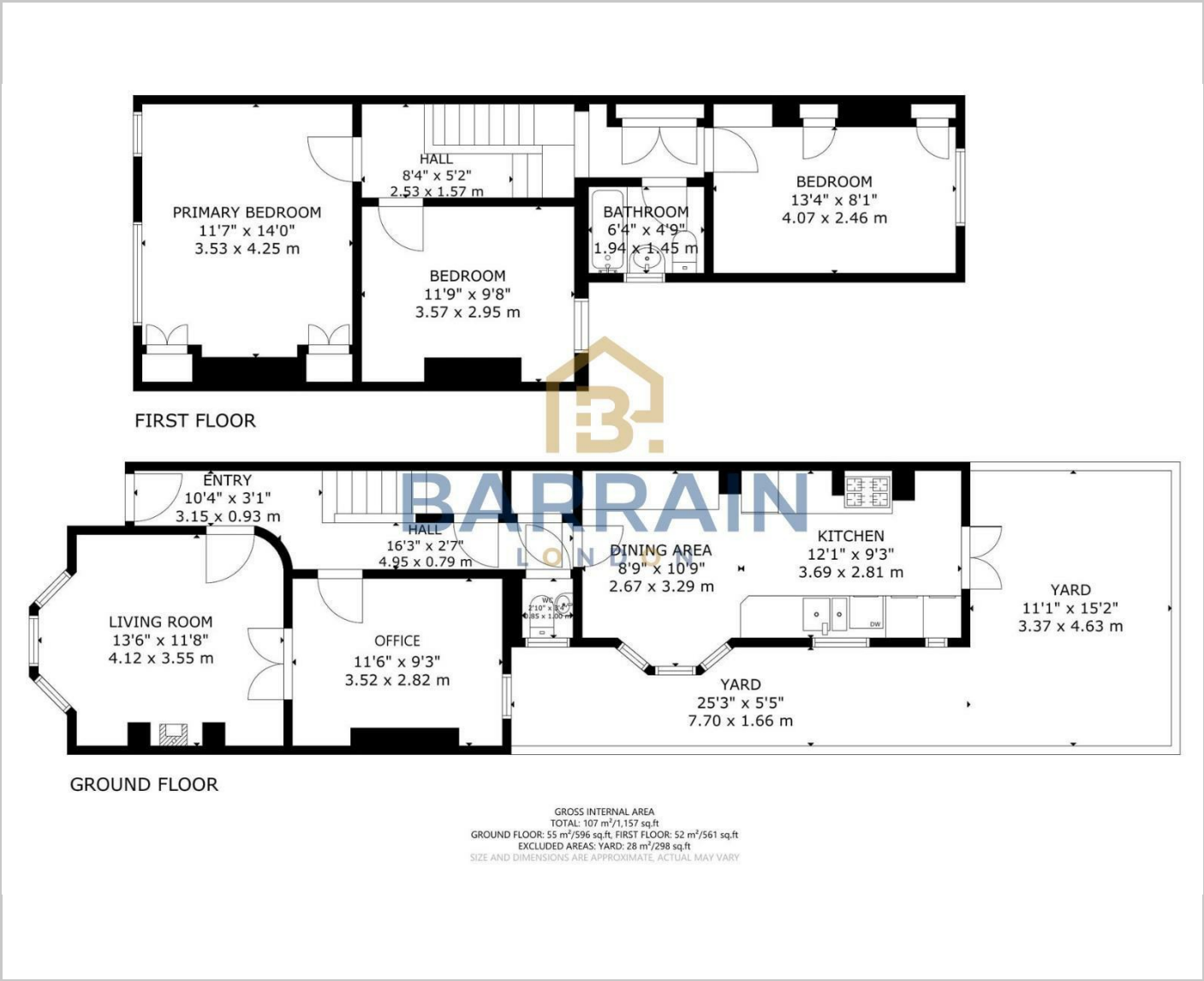


null

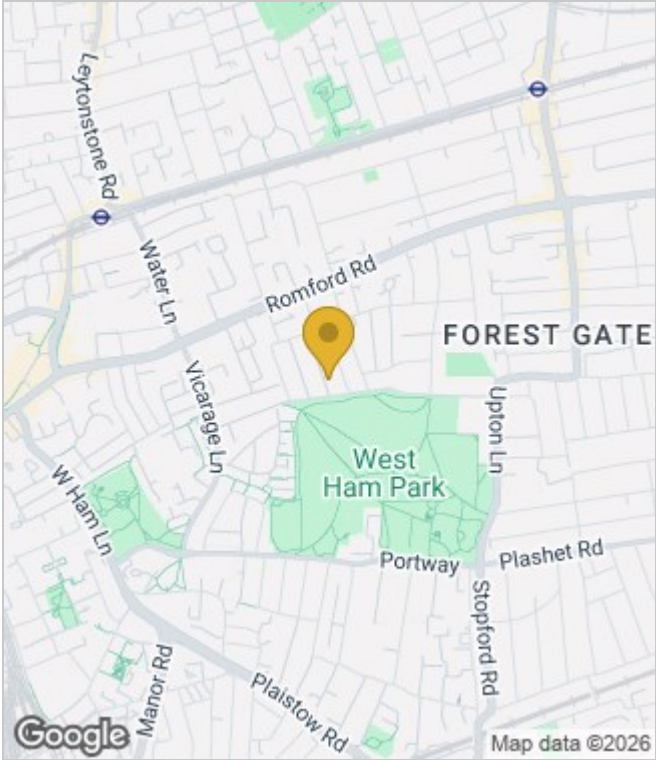
Council Tax Band: D

Available:

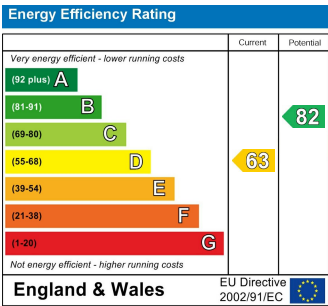
Floor Plans



Area Map



Energy Performance Graph



These particulars, whilst believed to be accurate are set out as a general outline only for guidance and do not constitute any part of an offer or contract. Intending purchasers should not rely on them as statements of representation of fact, but must satisfy themselves by inspection or otherwise as to their accuracy. No person in this firms employment has the authority to make or give any representation or warranty in respect of the property.